



Figure 1. Reference image 'I18'.

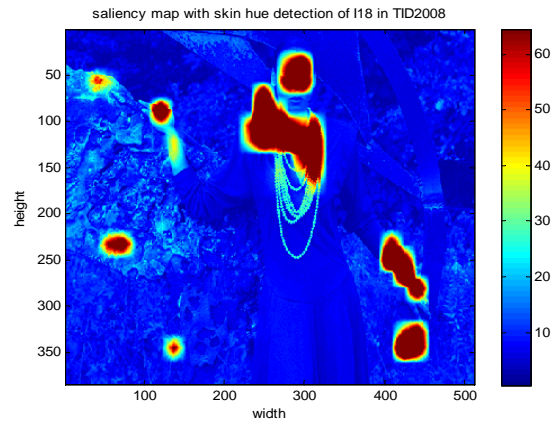


Figure 2. Saliency map of 'I18' with face detection.



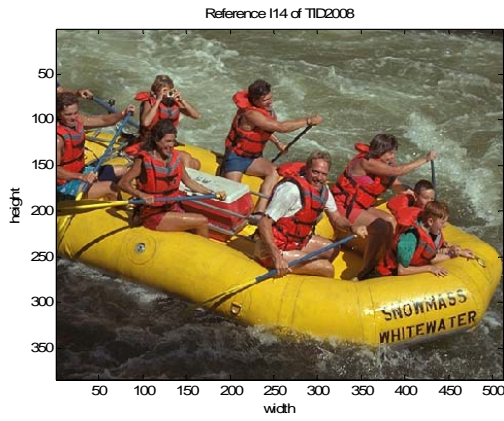
Figure 3. 'I18' with noise in one salient region.



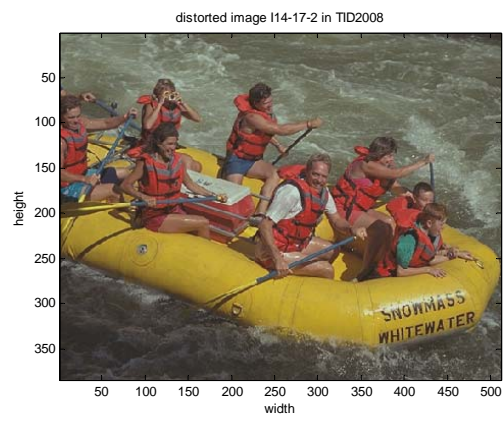
Figure 4. 'I18' with noise in four non-salient regions.



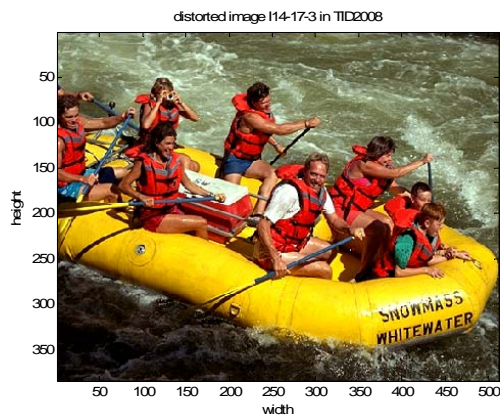
Figure 5. 'I18' with distortion in four non-salient regions.



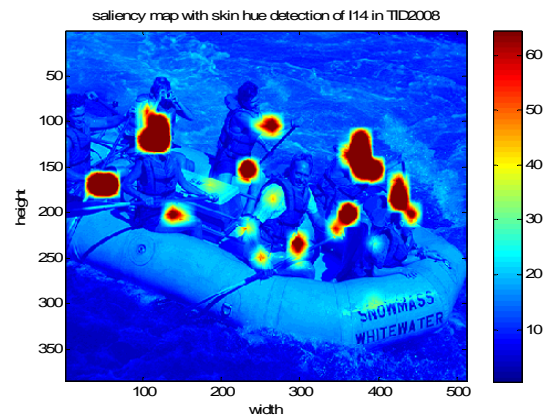
(a) the reference 'I14'.



(b) the distorted image 'I14-17-2'.



(c) the distorted image 'I14-17-3'.

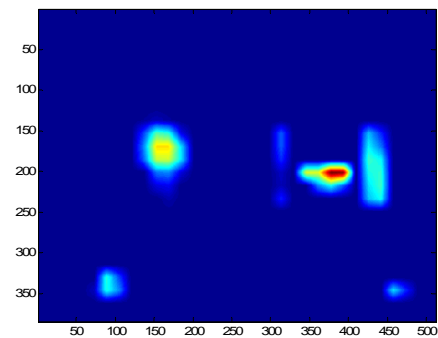


(d) the saliency map of 'I14'.

Figure 6. 'I14' and corresponding distorted image.

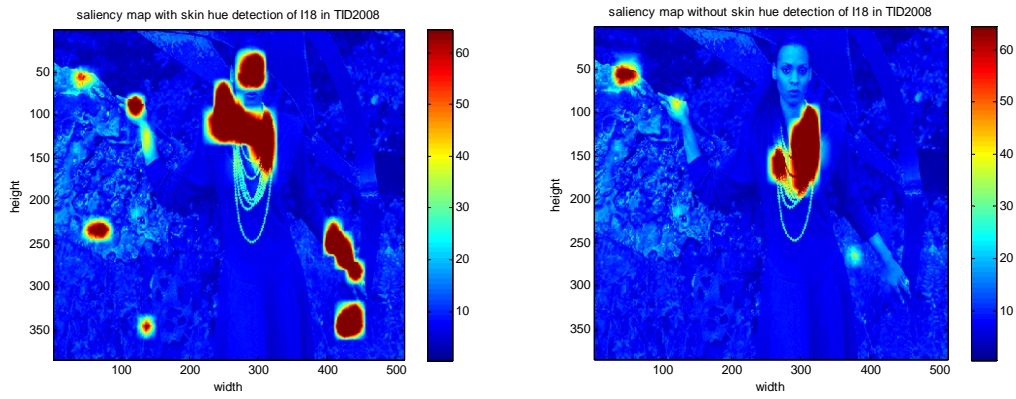


(a) reference image 'I01'.



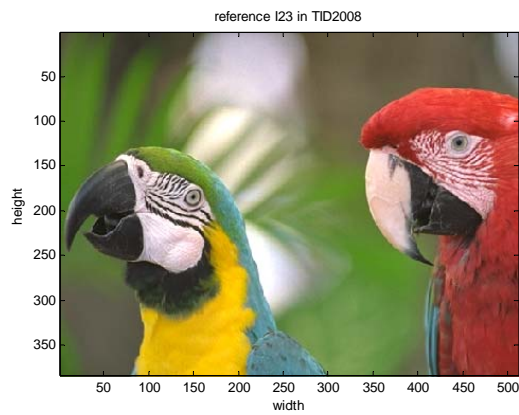
(b) saliency map of 'I01'.

Figure 8. Image 'I01' with its saliency map and corresponding surface plot.

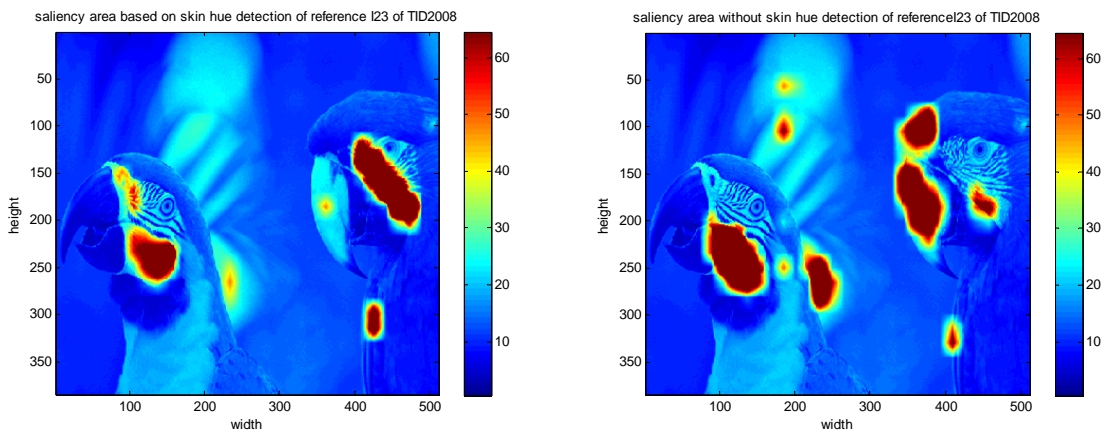


(a) Saliency map from mixed model. (b) Saliency map from Itti's model.

Figure 9. Saliency maps for mixed model and Itti's model on 'I18' reference image.

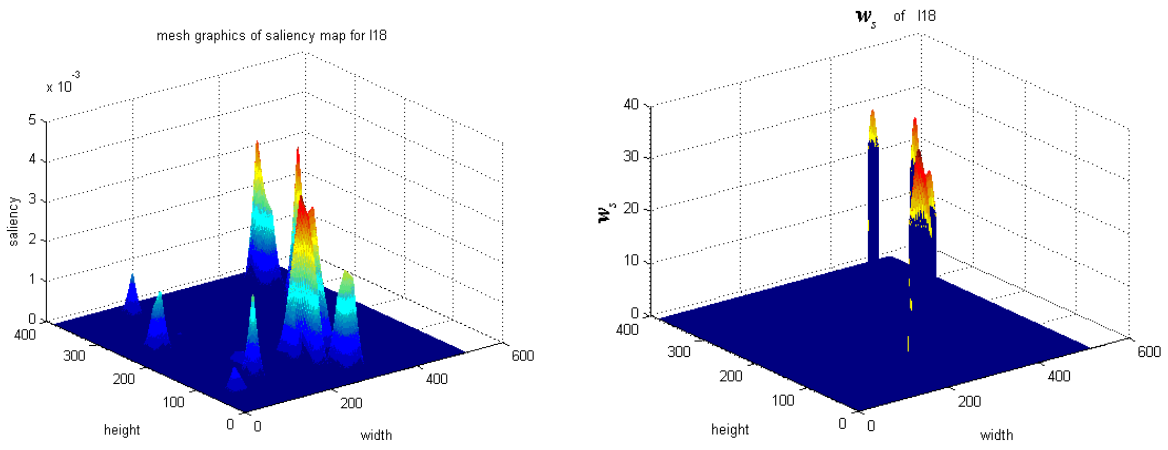


(a) 'I23' reference image.



(b) Saliency map from mixed model. (c) Saliency map from Itti's model.

Figure 10. Saliency maps from mixed model and Itti's model for 'I23' reference image.



(a) surface plot of saliency map.

(b) surface plot of weighted saliency map w_s .

Figure 12. Surface plot of saliency map and weighted saliency map w_s .



(a) original image



(b) Distortion 5: High frequency noise



(c) Distortion 8: Gaussian blur noise



(d) Distortion 12: JPEG transmission errors

Figure 13. Examples of distortions in different subsets